



CERTIFICATE OF ANALYSIS

PREPARED FOR:

LivCana / Life Activated, Inc.
8017 E. STATE HWY 76
KIRBYVILLE, MO 65679

THIS REPORT IS FOR A FULL BATCH TESTING
LABORATORY BATCH ID: LC-ENERGY.10.CAP.001

Including Batches & Fill Lot IDs:

1926406



SS|BioMed, Inc. • Frisco, TX 75034

©2019 All rights reserved.

LC 10 mg CBD ISOLATE CAPSULE

Lab Batch ID: LC-ENERGY.10.CAP.001
 Received: 21-Oct-2019
 Matrix: Concentrates/Capsule

Certificate ID: 102519SR004
 Test Type: Potency
 Method: Tested in accordance of the requirements of ISO/IEC 17025:2005/2017



The data presented in this report has been reviewed in an accredited laboratory. I attest that the information herein has been checked for accuracy and against quality control requirements for each test method used. These results pertain only to the test materials listed in this report. This report may not be reproduced except in its complete entirety.

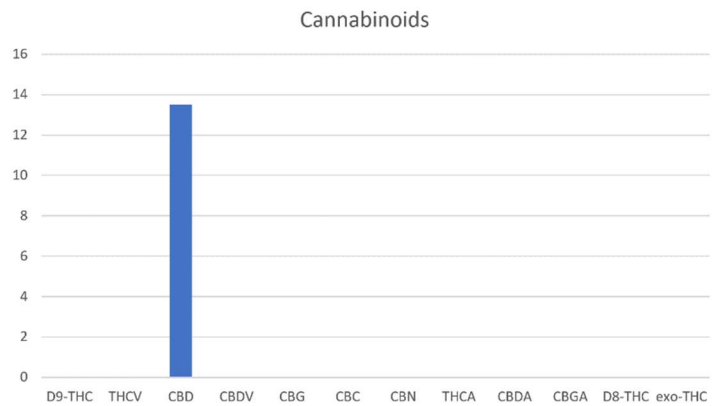
Dan Krist

Dan Krist
 Lab Manager
 SS BioMed, Inc.

T1: CANNABINOID PROFILE & POTENCY

The tested sample was analyzed (by Liquid Chromatography, LC) for plant-based cannabinoids. All collected data was compared to laboratory certified reference standards at known concentrations.

ID	Weight %	Conc. mg/unit
D9-THC	ND	ND
THCV	ND	ND
CBD	2.56	13.5
CBDV	ND	ND
CBG	ND	ND
CBC	ND	ND
CBN	ND	ND
THCA	ND	ND
CBDA	ND	ND
CBGA	ND	ND
D8-THC	ND	ND
exo-THC	ND	ND



TOTAL: 2.56 13.5 mg/unit
Max THC: 0.00 0.00 mg/unit
Max CBD: 2.56 13.5 mg/unit

Max THC and Max CBD are calculated values for total cannabinoids assuming complete decarboxylation of the acid to the neutral form. Calculation is based on the weight loss of the acid group during decarboxylation. **THC Minimum Detectable Limit** = 0.001 ng/mL
ND = None detected above the limits of detection (LLD)
trace = <0.015 mg/mL



SS|BioMed, Inc. • Frisco, TX 75034

©2019 All rights reserved.

	Limits	Result	Status
T2: Microbiological Contaminants¹			
Total Aerobic Bacterial Count	10,000 CFU/g	Conforms	PASS
Total Coliform Bacterial Count	100 CFU/g	Conforms	PASS
Total Yeast & Mold	1,000 CFU/g	Conforms	PASS
T3: Pathogenic Bacterial Contaminants¹			
E. Coli (O157)	NA	Negative	PASS
Salmonella	NA	Negative	PASS
T4: Heavy Metal Analysis			
using Inductively Coupled Plasma Mass Spectrometry (ICP-MS)			
Arsenic	<2 ppm	Conforms	PASS
Cadmium	<2 ppm	Conforms	PASS
Lead	<1 ppm	Conforms	PASS
Mercury	<1 ppm	Conforms	PASS
T5: Pesticide Analysis			
using Liquid Chromatography with Mass Spectrometry (LC/MS)			
Abamectin	300 ppb	None Detected	PASS
Abamectin B1b	300 ppb	None Detected	PASS
Azoxystrobin	40,000 ppb	None Detected	PASS
Bifenazate	5,000 ppb	None Detected	PASS
Bifenthrin	500 ppb	None Detected	PASS
Cyfluthrin	1,000 ppb	None Detected	PASS
Daminozide	10 ppb	None Detected	PASS
Etoxazole	1,500 ppb	None Detected	PASS
Fenoxycarb	10 ppb	None Detected	PASS
Imazalil	10 ppb	None Detected	PASS
Imidacloprid	3,000 ppb	None Detected	PASS
Myclobutanil	9,000 ppb	None Detected	PASS
Paclobutrazol	10 ppb	None Detected	PASS
Piperonyl butoxide	8,000 ppb	None Detected	PASS
Pyrethrin	1,000 ppb	None Detected	PASS
Spinosad	3,000 ppb	None Detected	PASS
Spiromesifen	12,000 ppb	None Detected	PASS
Spirotetramat	13,000 ppb	None Detected	PASS
Trifloxystrobin	30,000 ppb	None Detected	PASS
T6: Active Diols			
using Liquid Chromatography (LC)			
	Potency	Results per 30 capsules	Status
CBD	13.5 mg/unit	405.0 mg	PASS
D-9 THC	0.00 mg/unit	0.00 mg	PASS

¹ Contaminant detection testing in accordance with AOAC – OMA #2014.05, USP 2021, and USP 2022

-END OF REPORT-



SS | BioMed, Inc. • Frisco, TX 75034

©2019 All rights reserved.